

The Where's Ben 14 profile is the perfect solution for wall-washing, ceiling-washing or floor-washing. It creates an even wash of light on to a perpendicular surface meaning it is ideal for lighting art work, or brightening up dark walls or ceilings. Where's Ben 14 can be surface mounted or recessed.

MOUNTING OPTIONS		DIFFUSER OPTIONS		SUPER SERIES LED STRIP OPTIONS			SUPER SERIES LED STRIP OPTIONS		
Surface mounted	Opal	Lumens per metre	Watts per metre	Colour temp.	Lumens per metre	Watts per metre	Colour temp.		
Recessed	Clear	310lm		2700K	1955lm		2700K		
		330lm	3W	3000K	2060lm	20W	3000K		
		345lm		4000K	2160lm		4000K		
		760lm		2700K					
		800lm	7W	3000K					
		840lm		4000K					
		1520lm		2700K					
		1600lm	14W	3000K					
		1680lm		4000K					

- LED strip options vary depending on region – please consult your local distributor for more information. Other LED strip options are available on request, including RGB & RGBW.
- All lumen values refer to the bare LED strip. Losses through diffuser/profile are not represented. Consult photometric data.
- 5 year manufacturer's warranty on Super Series & Spec Series LED strip.

ACCESSORIES



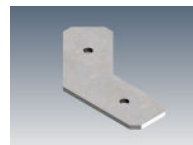
JN-ST-12
Straight joiner



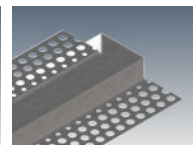
JN-90-12
90 degree joiner



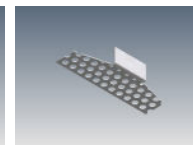
JN-120-12
120 degree joiner



JN-135-12
135 degree joiner



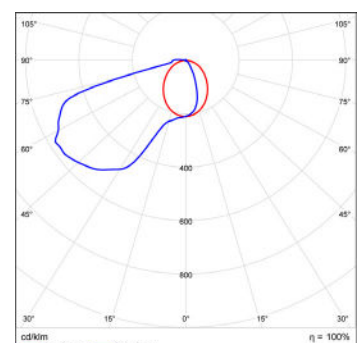
C-WB14-I
Recessing cowlings



C-WB14-EC-I
Recessing cowlings end cap

ADDITIONAL INFORMATION

Applications	Wall washing, uplight, lighting for shelving or display units, hallway lighting, lighting signage & art.
Installation	Interior and exterior (with IP67 rated LED strip).
Materials	Extruded aluminium body, polycarbonate diffuser, AES plastic end caps.
Finish	Natural silver anodised or custom powder coat.
Light source	LED ribbon strip.
Power supply	24V DC - remote driver options ranging from 6W up to 320W.
Dimmable	Various options available, please enquire.



Polar curve for 1890 lumen LED strip with clear diffuser.

