

The Downhill Dan 22 extrusion is our most powerful downlighting system. Utilizing two LED strips mounted side-by-side, this profile is ideal for applications where maximum light output is key. A versatile system suitable for various mounting options, Downhill Dan 22 can be surface mounted, recessed and suspended. Both wire and rod suspension options are available for the Downhill Dan 22 extrusion and the recessing systems for plasterboard ceilings and walls create a beautiful trimless finish.

MOUNTING OPTIONS	DIFFUSER OPTIONS	SUPER SERIES LED STRIP OPTIONS					
Surface mounted	Satin	Lumens per metre	Watts per metre	Colour temp.	Lumens per metre	Watts per metre	Colour temp.
Recessed		2x310lm		2700K	2x1955lm		2700K
Rod suspended		2x330lm	2x3W	3000K	2x2060lm	2x20W	3000K
Wire suspended		2x345lm		4000K	2x2160lm		
		2x760lm		2700K			
		2x800lm	2x7W	3000K			
		2x840lm		4000K			
		2x1520lm		2700K			
		2x1600lm	2x14W	3000K			
		2x1680lm		4000K			

NOTE: Downhill Dan 22 should always be used with twin parallel LED strips.
 - LED strip options vary depending on region – please consult your local distributor for more information. Other LED strip options are available on request, including IP54 and IP67.
 - All lumen values refer to the bare LED strip. Losses through diffuser/profile are not represented. Consult photometric data.
 - 5 year manufacturer's warranty on Super Series & Spec Series LED strip.

ACCESSORIES



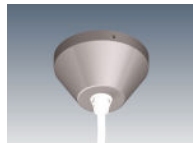
JN-ST-23
Straight joiner



JN-90-23
90 degree joiner



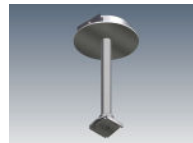
CB-60-R-S / CB-60-R-W /
CB-60-R-B
Cable base 60, recessed



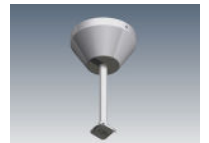
CB-80-SM-S / CB-80-SM-W /
CB-80-SM-B
Cable base 80, surface mount



SWK22-1-1M / SWK22-1-2M /
SWK22-1-4M
Wire suspension



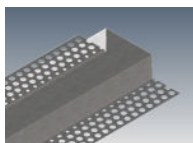
SRK-2-S / SRK-2-W / SRK-2-B
Rod suspension kit (rod not incl.)



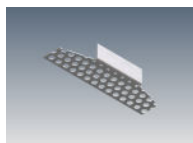
SRK-7-S / SRK-7-W / SRK-7-B
Rod suspension kit (rod not incl.)



ROD-0.5M / ROD-1M / ROD-2M
Suspension rod - 0.5m, 1m, 2m



C-DD22-I
Recessing cowlng



C-DD22-EC-I
Recessing cowlng end cap

ADDITIONAL INFORMATION

Applications	General downlighting in kitchens, living rooms, dining rooms, reception counters, office spaces.
Installation	Interior or exterior (with IP67 rated LED strip).
Materials	Extruded aluminium body, PMMA diffuser, aluminium end caps.
Finish	Natural silver anodised or custom powder coat.
Light source	LED ribbon strip.
Power supply	24V DC - remote driver options ranging from 6W up to 320W.
Dimmable	Various options available, please enquire.

