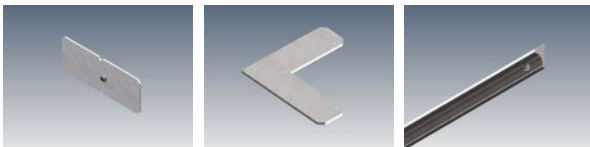


Dado Dave 20 is a sleek, architectural profile designed to provide high-output up lighting. The LED strip is positioned to maximise asymmetric distribution which offers smooth light out into the space. The concealed light source keeps glare to a minimum, while up to 2650lm per metre LED strip means it packs a punch. The extrusion is designed for super-quick screw-fixing, while a clip-in aluminium lid covers the screw heads and provides a smooth, easy-to-clean surface. For applications where Dado Dave 20 is being mounted flush with the bottom of a bulkhead, then the mounting adaptor can be used to reverse the direction of the mounting screw.

MOUNTING OPTIONS	DIFFUSER OPTIONS	SUPER SERIES LED STRIP OPTIONS					
Surface mounted	Opal	Lumens per metre	Watts per metre	Colour temp.	Lumens per metre	Watts per metre	Colour temp.
	Clear	310lm	3W	2700K	1955lm	20W	2700K
	Prismatic	330lm		3000K	2060lm		3000K
		345lm		4000K	2160lm		4000K
		760lm		2700K	2400lm		2700K
		800lm	7W	3000K	2530lm	26W	3000K
		840lm		4000K	2650lm		4000K
		1520lm		2700K			
		1600lm	14W	3000K			
		1680lm		4000K			

- LED strip options vary depending on region - please consult your local distributor for more information. Other LED strip options are available on request, including RGB & RGBW.  
 - All lumen values refer to the bare LED strip. Losses through diffuser/profile are not represented. Consult photometric data.  
 - 5 year manufacturer's warranty on Super Series & Spec Series LED strip.

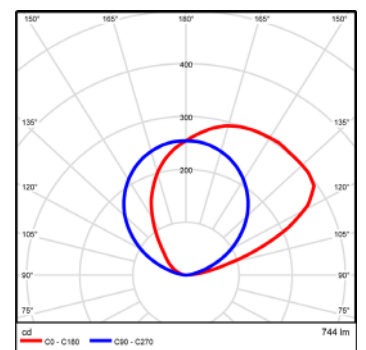
ACCESSORIES



JN-LOC Straight joiner      JN-90-22 90 degree joiner      MA-4M Bulkhead mounting adaptor

ADDITIONAL INFORMATION

Applications: Concealed indirect lighting for living rooms, board rooms, hallways.  
 Installation: Interior only.  
 Materials: Extruded aluminium body, polycarbonate diffuser, aluminium end caps.  
 Finish: Natural silver anodised or custom powder coat.  
 Light source: LED ribbon strip.  
 Power supply: 24V DC - remote driver options ranging from 6W up to 320W.  
 Dimmable: Various options available, please enquire.



Polar curve for 1890 lumen LED strip with clear diffuser.

