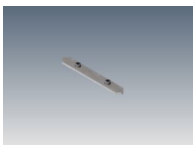


The Angle Andy 16 profile is great for use in display units, shelving, mirror cabinets or those tricky little architectural nooks and crannies that require a miniaturised asymmetric profile. The small "open" cavity at the back of the profile allows it to sit snug into the corner of a space, even where there are uneven surfaces caused by lumps of plaster or sealant.

MOUNTING OPTIONS	DIFFUSER OPTIONS	SUPER SERIES LED STRIP OPTIONS		
Surface mounted	Opal	Lumens per metre	Watts per metre	Colour temp.
		310lm		2700K
		330lm	3W	3000K
		345lm		4000K
		760lm		2700K
		800lm	7W	3000K
		840lm		4000K
		1520lm		2700K
		1600lm	14W	3000K
		1680lm		4000K

- LED strip options vary depending on region – please consult your local distributor for more information. Other LED strip options are available on request, including IP54 and IP67.
- All lumen values refer to the bare LED strip. Losses through diffuser/profile are not represented. Consult photometric data.
- 5 year manufacturer's warranty on Super Series & Spec Series LED strip.

ACCESSORIES



JN-ST-5
Straight joiner

ADDITIONAL INFORMATION

Applications	Task lighting in kitchen cabinetry, lighting for shelving or display units, mirror cabinets, niches.
Installation	Interior or exterior (with IP67 rated LED strip).
Materials	Extruded aluminium body, polycarbonate diffuser, AES plastic end caps.
Finish	Natural silver anodised or custom powder coat.
Light source	LED ribbon strip.
Power supply	24V DC - remote driver options ranging from 6W up to 320W.
Dimmable	Various options available, please enquire.

